



DIRECTV

# 24 Series Receivers

H24-100 • HR24-500



**FIRST LOOK SERIES**

# DIRECTV 24 Series Receivers



DIRECTV H24-100 HD Receiver



DIRECTV HR24-500 HD DVR

"Speed" is a big factor in our lives today, and the HR24 and H24 both deliver.

Imagine picking up your remote and experiencing guide data that scrolls through page after page of programming as fast as you can press a button.



[Click here for the exclusive teaser video on YouTube!](#)

## Are you on the Cutting Edge?

DBSTALK.com is home to the Cutting Edge forums, where users actively participate in testing pre-release software for DIRECTV receivers. The resulting rapid-deployment development method allows for faster fixes and abundant new features.

[Click here to learn more at DBSTalk.com!](#)

## Basic Specs:

H24 Manufactured by Technicolor  
(formerly Thomson)

HR24 Manufactured by Humax

Same User Interface as current  
H2x/HR2x receiver family

Smaller size

Touch-sensitive Front Panel

Built-in DECA functionality/  
Ethernet capable

SWiM and legacy satellite inputs

Multiroom Viewing (MRV)-capable

Increased Speed

Wall-Mountable (H24)

2-way remote programming

## About DBSTalk.com

Since its inception in 2001, DBSTALK.com has grown to represent the satellite communities for DIRECTV, Dish Network, Sirius/XM and Free-to-Air satellite reception. We provide user-to-user support for tens of thousands of users and are read by millions across the Internet, giving us the title of "The Internet's Satellite Resource."

Please note that some DBSTalk.com testers and staff members may have received free equipment from DIRECTV or its partners for the purpose of evaluation and testing.



# H24-100 High Definition Receiver

DIRECTV's newest HD Receiver, the H24-100, represents the next step forward in the evolution of HD receivers. Upon opening the box I was immediately impressed with the sleek, compact design of the H24. The H24 is smaller and slimmer than its predecessors, has rounded corners and no buttons. It's also designed for easy wall mounting with "keyhole" slots on the back.

The front panel consists of a touch panel with a door on the right for the access card. The DIRECTV logo is the power switch, which illuminates upon turning the unit on. The "guide", "menu", "center ring" and "res" buttons are painted/silk-screened and do not illuminate. There are small resolution lights for 480i, 480p, 720p, 1080i and 1080p. Even on its brightest setting, the light emitted from the front panel of the H24 is very subtle and non-intrusive. Like its predecessors, the lights can be dimmed or turned off by pressing the left and right arrows.

The rear panel has a satellite coax input, one component and one composite RCA video output, RCA L/R outputs and Digital Audio output, an HDMI output, a USB port, an ethernet Jack (which is disabled if you have ethernet-over-coax connected) and a phone jack. There is no S-Video output or optical/TOSlink output.

Setup was a breeze. After installing the DECA broadband connection to the SWiM coax leg that would include the H24, I connected the Sat-coax to the H24, an HDMI cable and the power cord. I went through the usual setup routine for new receivers and upon activation was presented with my normal DIRECTV HD viewing experience. From here, I was able to change the various user customizable settings to match my preferences.

The H24/DECA setup takes all the headaches out of networking the H24 and uses my existing coax runs. Although my house is pre-wired for networking, the ethernet-over-coax solution meant one less network run and with additional DECA modules, I was able to place all my HR2x's on the DECA cloud, freeing my home network for other traffic.

I have been very impressed with the H24, from its ease of setup to flawless performance. The H24 delivers a sharp, crisp picture that you would expect and great sound. DIRECTV Apps perform well on the H24. But best of all was the H24's ability to act as a MRV client. The H24 performed as well or better at MRV than my older HR2x's at the same/similar firmware levels. Although I have a preference for DVRs, I have used the H24 as my primary receiver during the field test and the H24 with its MRV capabilities has won me over for use as an additional receiver in any home with one or more DVRs.

—DBSTalk user say-what

## UNBOXING H24 • HR24





# H24-100 Photo Gallery



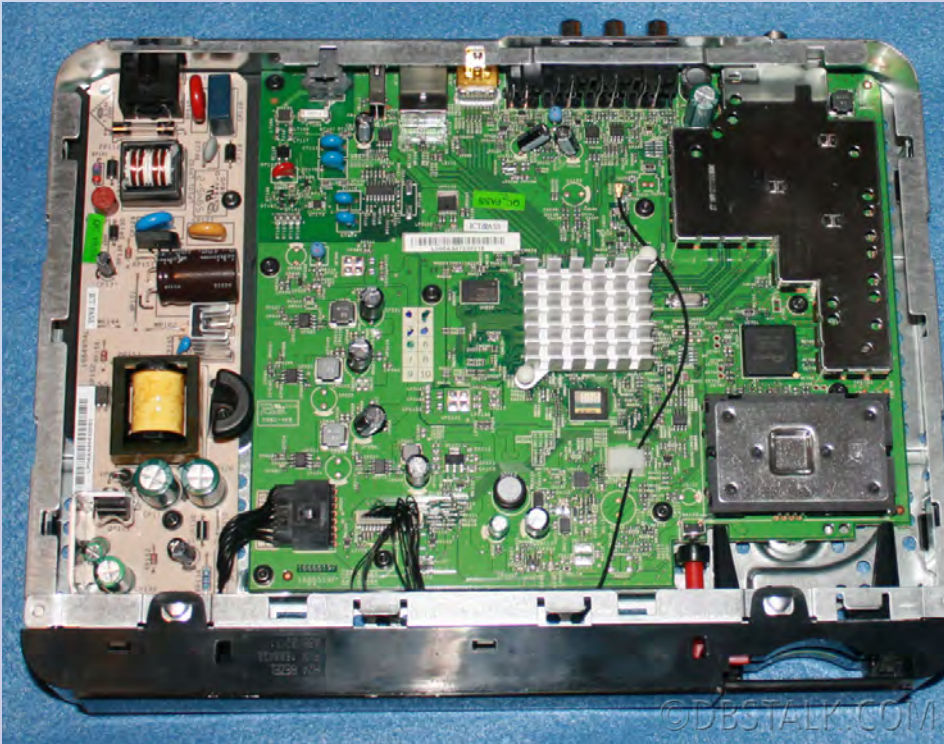
©DBSTALK.COM



©DBSTALK.COM



©DBSTALK.COM



©DBSTALK.COM



Underside with mounting holes



©DBSTALK.COM



Top with plastic cladding removed



©DBSTALK.COM



©DBSTALK.COM



# HR24-500 High Definition DVR

## Built-in DECA

Well folks, it keeps getting easier... DIRECTV has integrated DECA technology into their newest HD receivers. The HR24 and H24 are compatible with the recently announced DECA modules without the need for an external adapter. What does this mean to you? It means you now have fewer wires to hook up to it, fewer things to have piled up next to your TV's, and less to think about when you are setting up your new HR24 and H24 Receivers! Now, just one wire feeds both your internet and satellite feed into these receivers, making your life that much simpler. With a DECA connected to your home network, there is no need for wireless access points, or 100 foot long network cables to be run along your baseboards throughout your house to use any of the advanced features available on your DIRECTV HD Receivers!

[Click here  
for the DECA  
First Look at  
DBSTalk!](#)

The HR24-500 is DIRECTV's next step in the evolution of the HR platform. There is an all-new form-factor and all new internal architecture combined with DIRECTV's familiar, functional user interface.

The new unit is substantially smaller than previous designs, with a new design motif based on smooth lines and curved corners. It is also amazingly quiet - in my own experience I could hear neither any internal fan noise nor the sound of the internal disk drive.

One of the biggest, most visible changes in the design of these devices is the front panel controls. Physical buttons have been replaced by glowing blue backlit touch-sensitive surfaces. The power button on the box is a DIRECTV logo. The round "blue ring" remains, as do controls for accessing menus and so forth, but the layout and size of these illuminated controls gives a more sleek, modern appearance. In the words of my teenaged daughter, "Man, that thing is *pimped out!*"

The external connections and controls are similar to earlier boxes. This box is intended for DIRECTV's now-standard SWiM installation, either a SWiMLNB or through an external SWiM8 module, or the recently-announced SWiM16 or SWiM32. However, it will work just fine with two satellite lines and B-Band Connectors.

Functionality is nearly identical to prior boxes with a couple of minor and one major differences. First, the minor differences: networking is either through a standard RJ45 ethernet port, or through the satellite RG6 coaxial cable connection via DIRECTV's DECA technology. However, these networking differences are basically transparent to the user and are thus really minor changes from prior boxes.

Now the major difference: speed! Raw, unmitigated quickness is evident through every single moment using these boxes. The UI responds instantly to nearly any possible command - menus pop up, pages scroll as fast as you can press the button, even a unified Playlist of several terabytes' worth of programming scrolls through like lightning. Direct channel changes with the remote are quick and accurate, and channels change as fast as the HDMI handshake with the attached set will allow.

Combine this new form factor and this level of performance with a sizable 500 gigabyte drive that gives an estimated recording capacity of 100 hours of MPEG4 HD material or 400 hours of SD, and you have a fantastic addition to the DIRECTV HD DVR line that will make users very, very happy.

—DBSTalk.com user *LameLefty*



# HR24-500 Photo Gallery





# Feature Spotlight: Easier Remote Programming

Introducing DIRECTV's new RC65RX remote. This isn't any usual remote control unit. This new remote allows the ability for the receivers to program the remote automatically. With just a few simple questions about your other devices within the remote setup menu. It starts the new 2-way communications process between the receiver / remote. The setup is very simple and very user friendly.

Following these simple steps listed below is all that you'll need to have the new RC65RX controlling all the other devices within your system:

## **Menu> Parental, Fav's & Setup>System Setup>Remote Control>Program Remote>Setup AV1, AV2, & TV**

Once the setup begins, there will be a pop-up warning that states, "Please make sure there are no objects between the remote and receiver." Once you hit "OK" within the menu, the joy of ease is now set in motion.

There will be a menu selection that will appear that has the following: Setup AV1, Setup AV2, Setup TV

By selecting any one of these menu options, the receiver will prompt you to select which type of device you want to setup. once the menu selection is made for "Setup AV1." for example The next menu appears with Audio, Television, VCR, & DVD. Select any one of those devices that is to be assigned to AV1, and the ease begins with a few simple questions about the device.

Let's say the audio device option was selected and now a new menu pop-ups. This menu looks like the smart search screen. However, this isn't your normal menu. Just start typing in the brand of equipment that is to be assigned to AV1, and the brand name will begin to populate. Select the Brand name of the device, and the next question will ask you to spell out the model # of the device.

Once the brand name and model have been entered in the remote setup menu, the receiver will ask for confirmation and give you instructions on what to do next. The message will read as follows:

Setup instructions for device Audio in AV1 mode:

1. During setup, your screen will turn black for a few seconds.
2. After a few seconds, a message will be display the setup status.
3. Keep your remote pointed at the receiver and select ok below.

(Caution, this step does NOT require you to move the selector to AV1, AV2, or TV for this to work. Just leave it in the normal DIRECTV position.)

Once the setup begins the screen will go black with it stating "trying code message". Afterwards within a few seconds the menu will display, "Code was successfully received". It will then display the following:

- \* To test the code, press POWER
- \* If the device turns off: SELECT "IT WORKED"
- \* If the device does not turn off: SELECT "Try Different Model"

You need to go to the 'Advanced' option to change the IR/RF, Audio Lock, Set Receiver Mode and Multi-Box setup. Options like Audio Lock used to be set in the audio receiver setup but now you have to look in advanced to change that setting.

This is all that is needed to setup extra devices for the new RC65RX 2-way DIRECTV remote. The headaches of finding all the correct codes manually is over. Just answer a couple questions, point the remote, and the receiver takes all the guess work out.

If the model number is not shown (the database is huge, but there are some missing devices), select "I don't know my model". The receiver/remote will cycle through the available codes and you will be asked to test each one in order. You may need to go through several codes to find the correct one for your device, but be patient and follow the on-screen instructions.

—DBSTalk.com user gulfwarvet



# Final words from the test team

The H24-100 is clearly a worthy successor to the past H2x receivers and a wonderful addition to the DIRECTV receiver lineup. I have no hesitation in saying that it is the best non-DVR receiver we have seen from DIRECTV.

—Grentz

This is the best HD DVR DIRECTV has put out to date. It is super-fast, very quiet, stylish form factor, and has an ample 500gb of storage. You will not be disappointed with this receiver, I wasn't.

—dave29

Using faster chipsets and video processors than found in previous H2x generation units, the H24-100 noticeably outperforms any of its older brethren. The rounded and smaller case fits well into almost any decor, and with a single coax connection - setup is fast and simple.

—hdtvfan0001

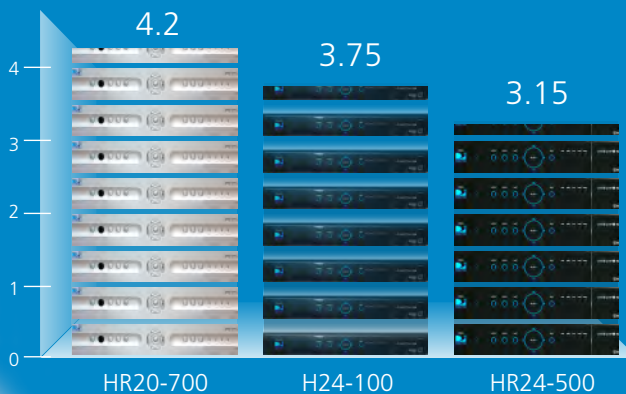
The overall performance of this STB is a "real eye opener." I don't think that anyone will be disappointed in this STB. With that being said this is a much needed update to the HD-DVR line.

—jasonki32

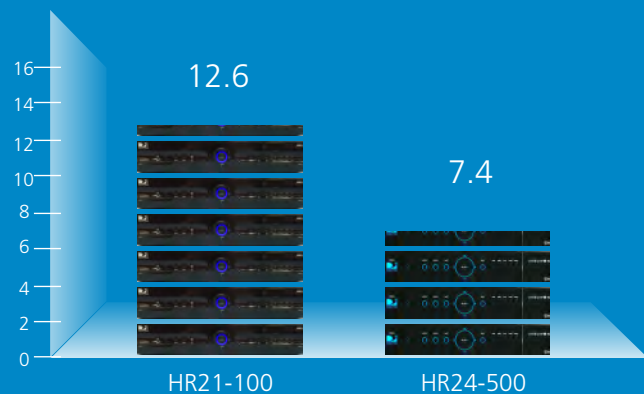
## Is it really that much faster? Check out this data!

The Cutting Edge test team compared receivers in two critical areas: channel changing speed and guide speed. The results are impressive! Look at the graphs below... **smaller numbers are better!** In the words of one tester, *"Makes Superman look slow!!"*

3 digit channel change (in seconds)



Guide scrolling, 20 times (in seconds)



Times are averages of multiple attempts by multiple testers.  
Channel change time was tested by direct 3-digit entry followed by hitting ENTER.